

# THE ROOK ARMORED CRITICAL INCIDENT VEHICLE



THE REAL TACTICAL ADVANTAGE.



## RING POWER TACTICAL SOLUTIONS

500 World Commerce Pkwy.  
St. Augustine FL 32092

904.494.7531 | [info@ringpower.com](mailto:info@ringpower.com)

*The Rook Patent Pending.*

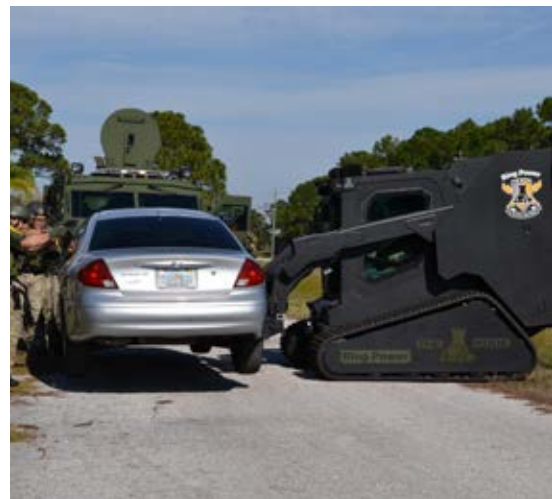
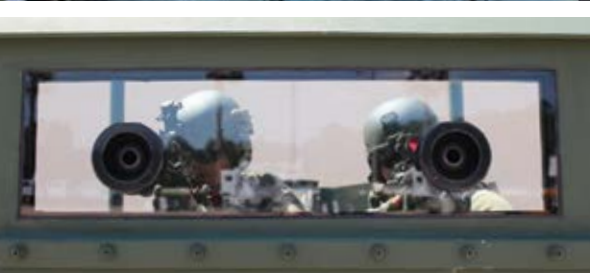
[RINGPOWER.COM/TACTICALSOLUTIONS](http://RINGPOWER.COM/TACTICALSOLUTIONS)

**“We use it all the time for everything,  
You’ve Got To Have It!”**

— **BOBBY STEWART**  
ST. JOHNS COUNTY SHERIFF'S OFFICE  
SPECIAL OPERATIONS



# THE ROOK



## THE REAL TACTICAL ADVANTAGE.

When law enforcement officers are called to any emergency situation – they have to be prepared for the worst case scenario. Whether dealing with a hostage rescue, barricaded suspects, riot scene, or natural disaster, having the tactical advantage is critical.

The Rook Armored Vehicle is custom designed and fabricated by Ring Power Corporation, the North and Central Florida Caterpillar Dealer. Utilizing the powerful Cat® chassis as the base, The Rook provides service advantages that other

tactical vehicles just don't have. Unlike traditional armored vehicles, The Rook is capable of being used in tight areas both inside and outside of public buildings to transport personnel or equipment and for surveillance. It is designed with mission specific attachments that increase job safety and can easily be changed depending on situational needs.

Law enforcement agencies across the United States and around the globe utilize The Rook to confront complex threats and make tactical operations safer.

“I don't ever feel like I'm in danger when I'm



## THE ROOK STANDARD PACKAGE

### The Rook Vehicle:

- Cat® chassis
- 74.3 Gross HP Engine
- Cab Reinforcement Fabrication with NIJ Level IV Armor
- 13,300 lbs. Operating Weight

### Includes these Attachments:

- Armored Deployment Platform (ADP) with integrated wireless video camera system
- Hydraulic Breaching Ram (HBR) with integrated video system
- Vehicle Extraction Tool (VET)
- Grapple Claw (GC)
- 25' x 8' Gooseneck Trailer with additional 6' dovetail loading ramp, two 12,000 lb. axles, dual tandem wheels & tool box

### Optional Equipment & Upgrades (At Additional Cost):

- OC Dispenser System – for deployment of OC from the front of the Hydraulic Breaching Ram.
- Integrated Night Vision
- FLIR Thermal Imaging
- Tactical Breaching Tools mounted to Platform
- Light Bar Package (LED)
- Wireless feed with wrist mounted monitors for team
- Warranty Upgrades – Parts and Labor Extended Service Coverage 36 Months/3,000 hours.
- Wireless Remote Control
- CW, TICS & TIMS detection
- CBRN cab-overpressure
- Explosives / IED mitigation package
- Real-time video uplink

## ARMORED DEPLOYMENT PLATFORM *Patent Pending.*

One of The Rook's strategic attachments is the Armored Deployment Platform. The custom built NIJ Level IV platform includes a sloping partial roof cover and a floor-to-roof front shield. The shield features a sliding center door and batwing doors on the outer edges, plus independent power for two Go Lights. The ADP provides room for up to four fully-dressed officers and is equipped with two locking gun ports, four 5" x 9" sliding gun ports, four bullet proof glass sight ports, and 2 wireless infrared video cameras attached to the front of the platform with video feed to the equipment operator.



When the Armored Deployment Platform is mounted on the vehicle, the operator can raise it to 11 feet so that entry can be made on both the first and second floors, and the roofs. The platform height is also ideal for airplane assault incidents. In a vehicle take down, the platform can be slanted downward for crowd control and rescues.

The ADP allows a bomb squad to be delivered closer to the proximity of a suspicious device eliminating long walking distances in heavy protective gear. The Rook can deliver the platform where other vehicles can't go including schools, malls, large crowds and more. The platform can be detached and used as a fortified position with room for an additional three officers as opposed to hand-carried ballistic shields. Additional uses include hostage rescue, suspicious package removal, bus assaults and delivering hostage negotiation supplies all while behind Level IV Armor.

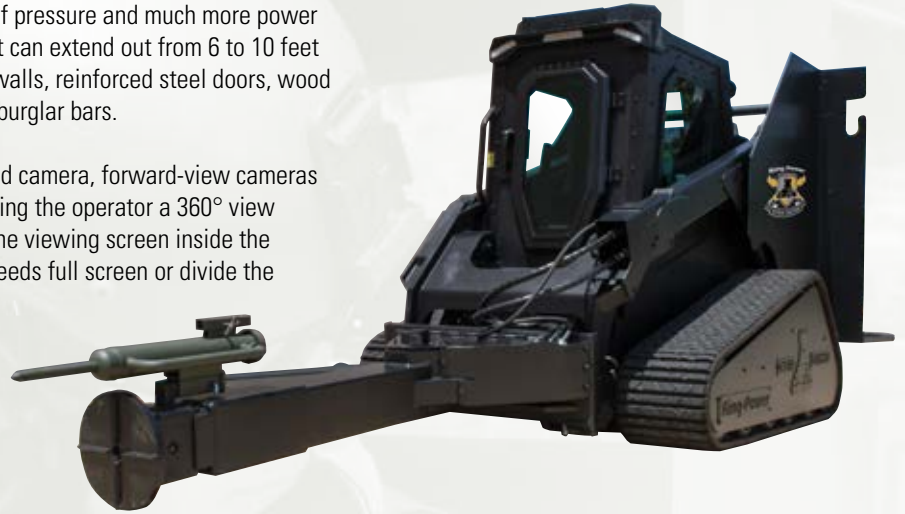
up close and personal in this machine.”

— MICKEY MITALY  
JACKSONVILLE SHERIFF'S OFFICE  
S.W.A.T. TEAM MEMBER

## HYDRAULIC BREACHING RAM *Patent Pending.*

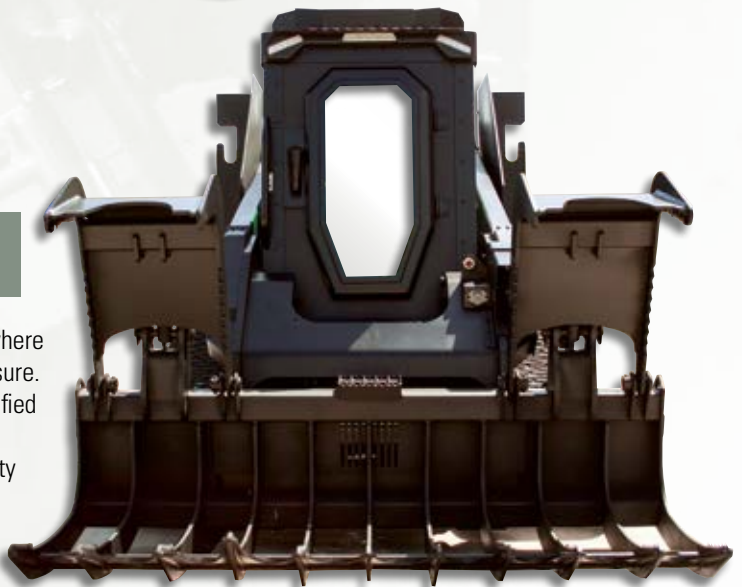
The Hydraulic Breaching Ram attachment delivers 6,500 psi of pressure and much more power than a traditional hand-carried ram. This standard attachment can extend out from 6 to 10 feet and give a controlled breach of the structure including block walls, reinforced steel doors, wood and concrete, hurricane windows and windows protected by burglar bars.

The ram is equipped with four low-light video and one infrared camera, forward-view cameras recessed into the end – one on each side and one in front-giving the operator a 360° view of the breaching area. The video images are transmitted to the viewing screen inside the cab with the operator. The operator can view single camera feeds full screen or divide the screen into 8 views to see all ram cameras, and all of these can be transmitted to the command center.



## VEHICLE EXTRACTION TOOL

The Vehicle Extraction Tool was fabricated for powerful use in the immobilization or removal of a vehicle in tactical applications. The tool can be used to push or pull a parked vehicle, pick up the car completely and move to a safe location, or positioned to lift rear wheels of an occupied vehicle to render it immobile.



## GRAPPLE CLAW

The Grapple Claw is intrusive and can be utilized to gain access to attics where suspects might be trying to hide or seek protection from ground level exposure. With 4,500 lbs. of lifting capacity, use of the grapple claw in removing fortified doors, burglar bars, or exterior shrubbery can simplify access for armed officers. The grapple claw also aides in disaster relief efforts with the ability to remove debris from streets for emergency responders' access.

“The Rook is a true game changer when it comes to

# THE ROOK BRIEF EQUIPMENT SPECIFICATIONS



our tactical operations.”

— MAJOR KEITH A. STONE  
PENNSYLVANIA STATE POLICE  
DIRECTOR, BUREAU OF EMERGENCY AND SPECIAL OPERATIONS



## THE ROOK

- Cat® chassis
- 74.3 Gross HP Engine
- Two-Speed Power Train 9.4 mph
- Operating Weight 13,300 lbs. (Machine only)
- Ground Pressure 5.0 psi
- Fuel Tank 24.8 gal.
- Bucket Pin Height at Maximum Lift 125.1 in.
- Vehicle Width 78.0 in.
- Hydraulic Quick Coupler
- NIJ Level IV Armor
- Enclosed ROPS Cab with Air Conditioner/Heater
- Dual Level Suspension Undercarriage, Two Speed, Self Level, Advanced Machine Information and Controls System (AMICS)

*\*All specifications are approximate and subject to change.  
The Rook Patent Pending.*

# Ring Power



## **RING POWER TACTICAL SOLUTIONS**

500 World Commerce Pkwy.  
St. Augustine FL 32092

**904.494.7531** | [info@ringpower.com](mailto:info@ringpower.com)

[RINGPOWER.COM/TACTICALSOLUTIONS](http://RINGPOWER.COM/TACTICALSOLUTIONS)